

# 493-497 COMMONWEALTH AVE



N  
O  
W  
A  
V  
A  
I  
L  
A  
B  
L  
E  
F  
O  
R  
L  
E  
A  
S  
E



PRECISION

REALTY GROUP, LLC

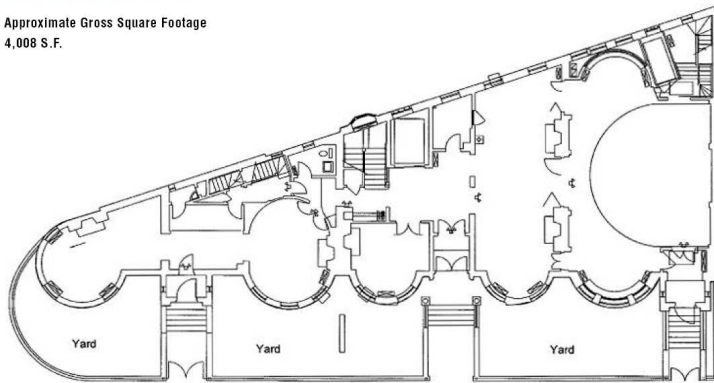
1401 Walnut Street | Philadelphia, PA 19102  
T: 215.300.9688 | [www.precisionrg.com](http://www.precisionrg.com)



- **BUILD TO SUIT**
- 4 Stories +Basement
- Available SF: 19,000 +/-
  - 493-95 Commonwealth—9,674 SF
  - 497 Commonwealth—7,456 SF
- Neighborhood: Kenmore Square features a lively congestion of shops, restaurants, bars, hotels, clubs, and educational institutions. Boston University, only a block away, drives the area's economy. Just south down Brookline Avenue is Fenway Park, home of the Boston Red Sox. Kenmore Square is easily reachable by way of the MBTA green line, which emerges from Boston's underground subway at the square.

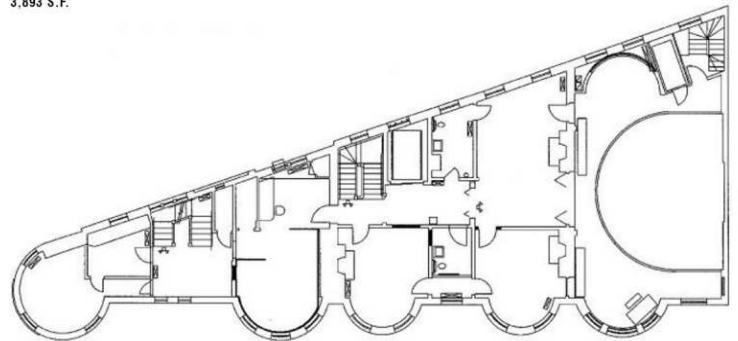
FIRST FLOOR PLAN

Approximate Gross Square Footage  
4,008 S.F.



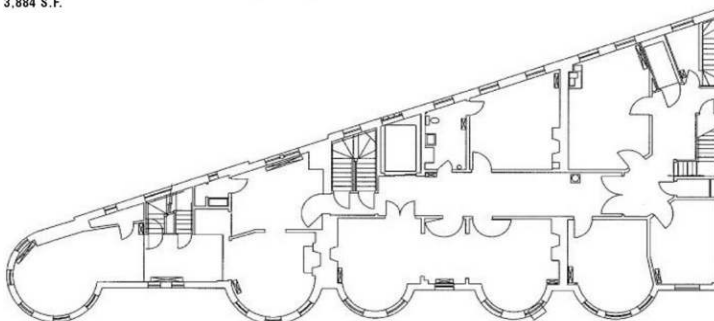
SECOND FLOOR PLAN

Approximate Gross Square Footage  
3,893 S.F.



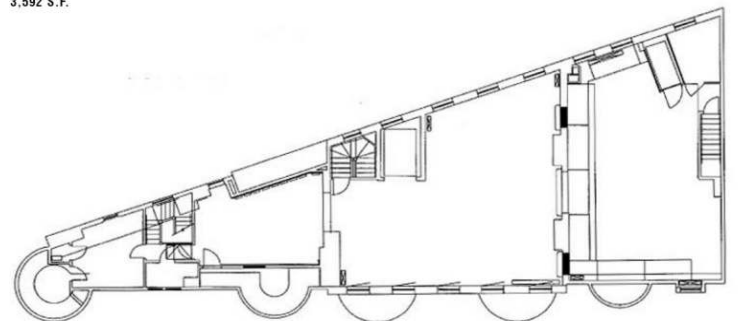
THIRD FLOOR PLAN

Approximate Gross Square Footage  
3,884 S.F.



FOURTH FLOOR PLAN

Approximate Gross Square Footage  
3,592 S.F.



**PRECISION**

**REALTY GROUP, LLC**

**Contact**

**Shaun Lyons** | President & CEO  
slyons@precisionrg.com | 215.300.9688