

168 N MICHIGAN AVE

BUILD TO SUIT
6,000 TO 66,00 SF

N
O
W
A
V
A
I
L
A
B
L
E
F
O
R
L
E
A
S
E



PRECISION

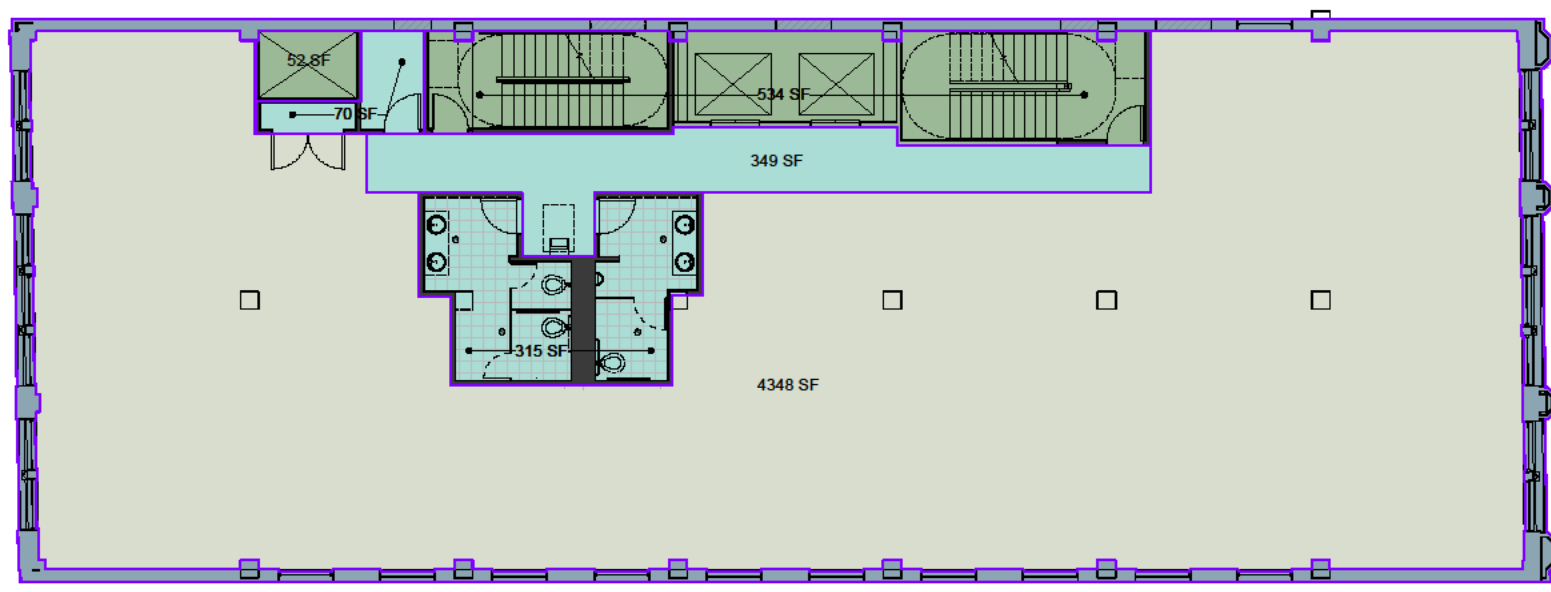
REALTY GROUP, LLC

1401 Walnut Street | Philadelphia, PA 19102
T: 215.300.9688 | www.precisionrg.com

168 NORTH MICHIGAN AVENUE CHICAGO, IL 60601



- Office Space available for lease
- Built to Suit
- 6,000 SF to 66,000 SF
- \$24.00 Gross



Outside Wall Area	6116 SF
BOMA Rentable	
All Area to Windows	5668 SF
Less Shafts <Stair/Elevator>	534 SF
<Mech.>	52 SF
Net Rentable	5082 RSF
Usable Multi-Tenant	
Less Toilets	315 SF
Less Telephone/Electric	70 SF
Less Corridor	349 SF
	4348 USF

April 16, 2009  

TYPICAL FLOOR PLAN

(Approximate Area. Building Not Field Measured)



In conjunction with:
OZ Advisors, LLC

Contact
Stephen J. Jeffries
sjeffries@precisionrg.com
267.707.3327