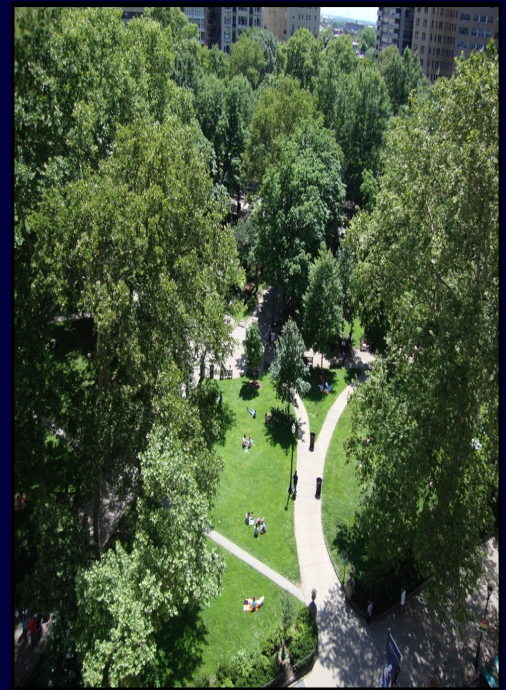


1805 WALNUT STREET



RITTENHOUSE SQUARE OFFICE/RETAIL SPACE NOW AVAILABLE FOR LEASE!

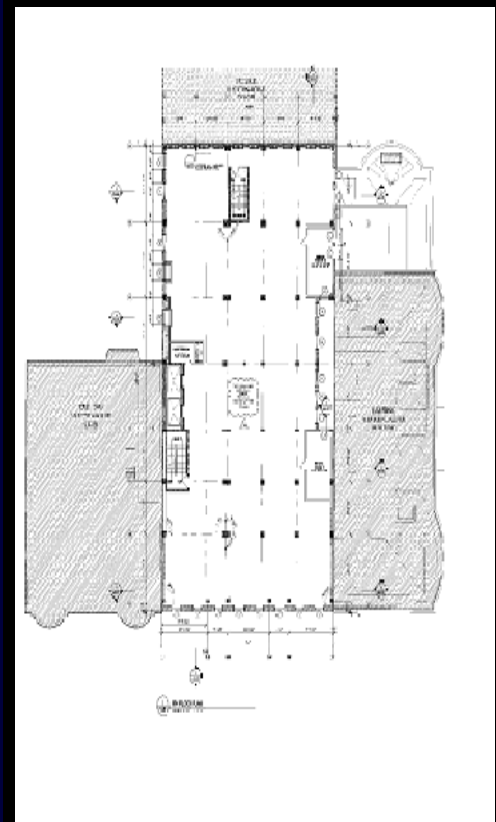
PRECISION |

REALTY GROUP, LLC

1805 WALNUT



- 9,000 SF
- 4th Floor above Barnes & Noble
- \$32.00 psf NNN
- Landlord will offer standard Vanilla Box
- Ideal for Medical, Spa/Salon, Yoga
- Join elite neighboring businesses such as Barney's, Barnes & Noble, Rouge, and Devon Seafood Grill



Precision Realty Group
1401 Walnut Street | Philadelphia, PA 19102
T: 215.300.9688 | www.precisionrg.com

Shaun M. Lyons
SLyons@precisionrg.com

Stephen J. Jeffries
SJeffries@precisionrg.com