

OFFICE SPACE AVAILABLE FOR LEASE AT 19TH & CHESTNUT ST



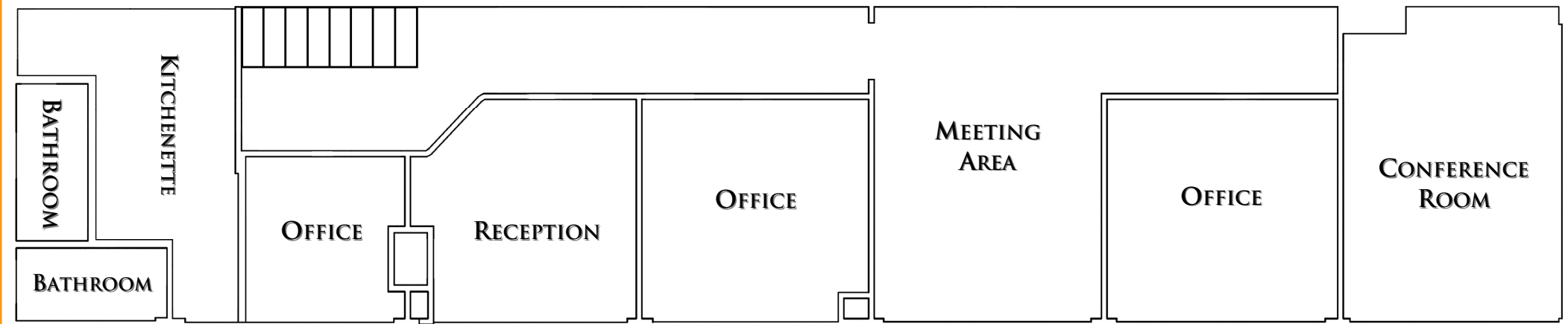
PRECISION | REALTY GROUP, LLC

1839 CHESTNUT ST

PHILADELPHIA, PA



- Premier office space located at the corner of 19th & Chestnut St.
- High ceilings
- Large windows
- Kitchenette
- Private entrance
- Signage available on 19th Street
- Located above Starbucks
- SF Available: 2,000 +/-
- Rental Rate: \$20.00/sf/yr



PRECISION | REALTY GROUP, LLC

1401 WALNUT STREET | PHILADELPHIA, PA 19102
WWW.PRECISIONRG.COM | (215) 300-9688

SHAUN M LYONS
SLYONS@PRECISIONRG.COM

STEPHEN J JEFFRIES
SJEFFRIES@PRECISIONRG.COM